

INSTALLATION INSTRUCTIONS

Model 670 Shaft Extension Kit

Lagun Table Feed 1500



REFERENCE DRAWINGS ENCLOSED

NA-5444	Bevel Gear Installation
NB-1995	Power Feed Installation
ND-5563	Shaft Extension Installation
0800-80001	Servo Power Feed Operation
0800-80025	Installation Instructions Model 1500

PREPARATION

Step 1: Remove power feed from table.

Step 2: Caution: All mounting hardware must be retained: shims, bearing race, bevel gear, etc.

INSTALLATION OF SHAFT EXTENSION KIT

Step 1: Using existing screws, mount the adaptor to end of table.

Step 2: Slide spacer, bearing race and sleeve onto the lead screw.

Step 3: Screw shaft extension onto lead screw.

Step 4: For proper shimming of bevel gear, shoulder of shaft extension from the face of the adaptor to be 17/32 to 9/16 maximum. The .787 diameter shoulder may have to be machined back to obtain proper dimension. See installation drawing.

Step 5: With shaft extension in position, drill 1/8 diameter through and pin with 1/8 x 1.0 roll pin.

INSTALLATION OF POWER FEED

Step 1: See installation instructions enclosed.

Step 2: Replace adaptor with shroud and two 1/4-20 socket screws supplied.

SERVO PRODUCTS COMPANY

Web: www.servoproductsco.com

CALIFORNIA BRANCH

1355 W. Foothill Blvd.
Azusa, CA 91702
Ph. 626.691.0121 Fax 626.334.7301

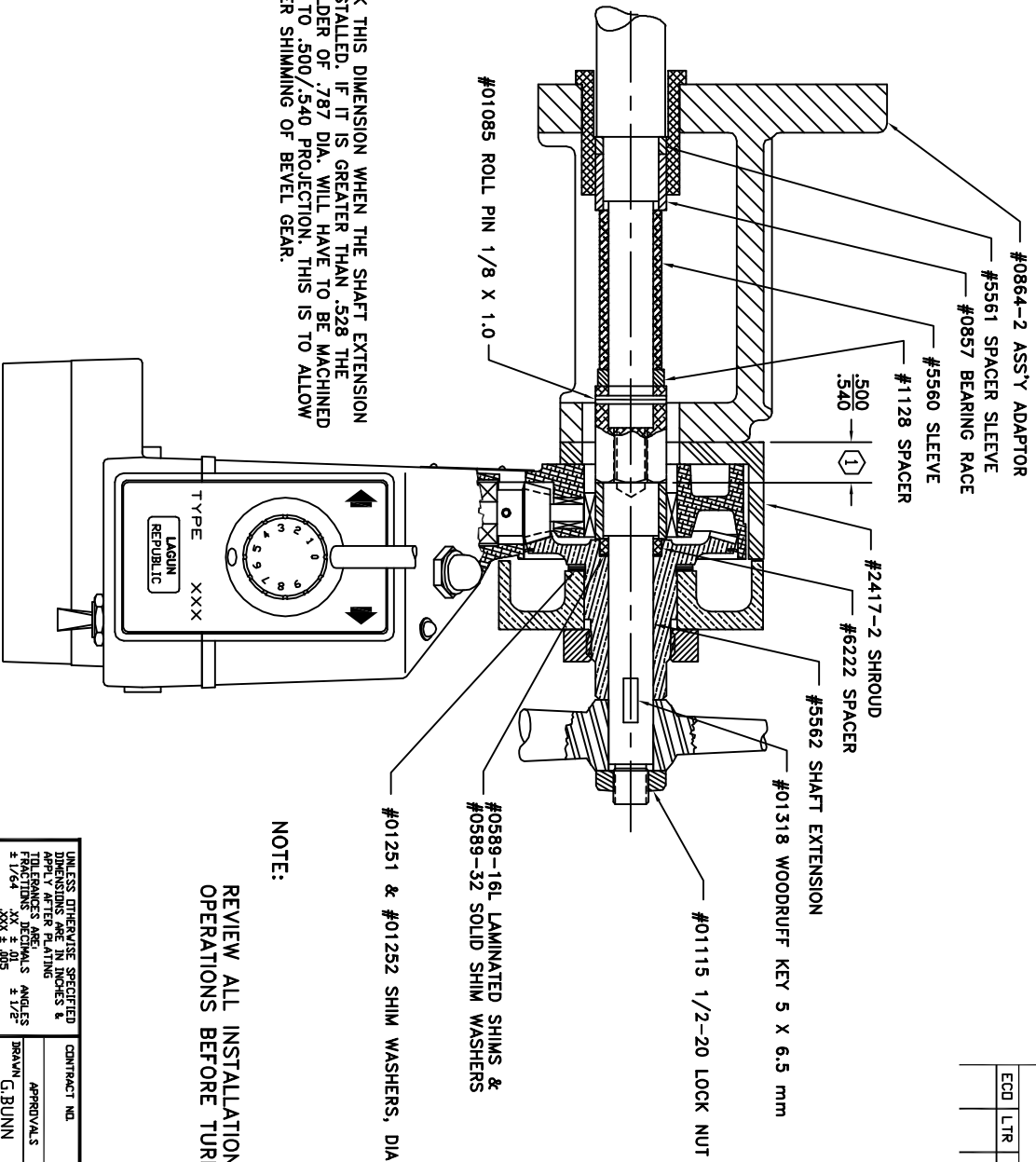
HEADQUARTERS

34940 Lakeland Blvd.
Eastlake, OH 44095
Ph. 440.942.9999 Fax 440.942-9100

FLORIDA BRANCH

8950 131st Ave. N.
Largo, FL 33773
Ph. 727.585.8555 Fax 727.585.6555

REVISION		DATE	DRAWN	CHECKED
ECD	LTR			
DESCRIPTION				



NOTES:
 (1) CHECK THIS DIMENSION WHEN THE SHAFT EXTENSION IS INSTALLED. IF IT IS GREATER THAN .528 THE SHOULDER OF .787 DIA. WILL HAVE TO BE MACHINED BACK TO .500/.540 PROJECTION. THIS IS TO ALLOW PROPER SHIMMING OF BEVEL GEAR.


NOTE:
 REVIEW ALL INSTALLATION INSTRUCTIONS AND POWER FEED OPERATIONS BEFORE TURNING ON SERVO POWER FEED.

THIS DOCUMENT CONTAINS PROPRIETARY INFORMATION OF SERVO PRODUCTS COMPANY WHICH MAY NOT BE DISCLOSED TO OTHERS WITHOUT THE WRITTEN AUTHORITY FROM AN OFFICER OF SERVO PRODUCTS COMPANY.

UNLESS OTHERWISE SPECIFIED PERPENDICULARITY, PARALLELISM, STRAIGHTNESS, FLATNESS, ROUNDNESS, CONCENTRICITY, CYLINDRICITY TO BE WITHIN .01 TOTAL OR .040/ft. SURFACE ROUGHNESS WITHIN 125 REMOVE SHARP CORNERS AND EDGES .005 MIN. DIMENING STANDARD PER ANSI Y14.9M-1982

TYPE	LAGUN	REPUBLIC
XXX		
USED ON		
APPLICATION		
NEXT ASSY		

UNLESS OTHERWISE SPECIFIED DIMENSIONS ARE IN INCHES & TOLERANCES ARE AS FOLLOWS FRACTIONS DECIMALS ANGLES ± 1/64 .XX ± .05 ± 1/2°	CONTRACT NO.	APPROVALS	DATE
MATERIAL NOTED	DRAWN G. BUINN	CHECKED	9/9/96
FINISH	COMPUTER NO. NB5563B.DWG		
DID NOT SCALE DRAWING			


SERVO PRODUCTS COMPANY
 34940 LAKELAND BLVD., EASTLAKE, OH 44095
LAGUN MODEL 670
INSTALLATION DRAWING
SHAFT EXTENSION
 SIZE CODE IDENT. NO. DRAWING NO. SHEET OF
 B 0800-80024 NB-5563 B
 SCALE REV.